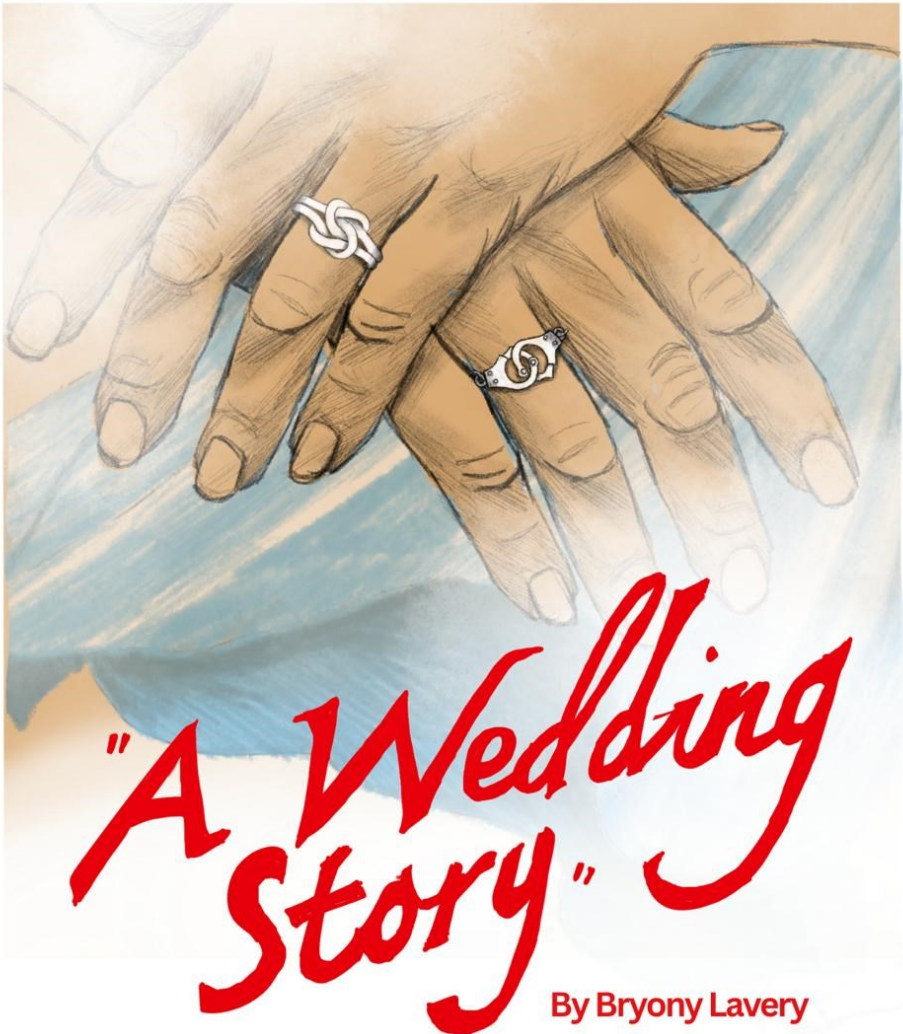


West Bridgford Dramatic Society

The Studio Theatre, Stamford Rd, NG2 6LS



By Bryony Lavery

3-7 Feb 2026



WBDS.co.uk
07942352982



This amateur production of "A Wedding Story" is presented by arrangement with Concord Theatricals Ltd. On behalf of Samuel French Ltd. www.concordtheatricals.co.uk



Chair's Welcome - Lynn Burges

A very warm welcome to The Studio Theatre for our February production, *A Wedding Story*. An enormous amount of hard work has gone into bringing this play to life and I hope that you have an enjoyable evening. If you do, please tell family and friends where we are and what we do.

This programme contains details of the rest of the season. For those of you who love a good comedy, the May slot sees the return of Craig Russell directing *The Game's Afoot*. Our Play Reading Group are currently working with Arran Mackay and Jeff Tullin to find a couple of interesting one act plays for them to direct in the July slot. By the time you are reading our May programme, the decision will have been made!

If you are interested in joining our merry band, or have suggestions for improvements, or feedback on something we are doing well, please speak to one of our Front of House team or contact us through the website or on Facebook. It would be really interesting to know if there are any plays in particular you'd like to see us put on. We are increasingly active on social media, so give us a follow on Facebook , Instagram and Tik Tok. This is the very best way to keep an eye out for upcoming productions and Tuesday night social activities.

All that is left for me to say is "I hope you enjoy this evenings entertainment and don't forget to switch your phone off!"

Director's Notes - Calum Sharp



I hope you all had a lovely Christmas and New Year. Welcome to our first production of 2026.

A Wedding Story by Bryony Lavery.

This play looks at different attitudes toward relationships, commitment and marriage, comically framed through the lens of two generations of a single family. It was written, and is set, at the turn of the millennium, so

references the state of equality rights prevalent at the time. In the play we see one couple, representing the traditional great love, struggling with the impact of Alzheimer's afflicting one Casablanca-loving wife and mother, and the effect that has on the family around her. Meanwhile their daughter meets her great love and struggles with the reality of having to grow up and engage in a committed adult relationship. All this is told in a non-linear, fragmented series of short scenes peppered with light-hearted comic sensibilities.

When I first read this play I found it hilarious, touching and compelling and I truly hope that you'll feel the same after you've seen our production.

Bryony Lavery was born in 1947, and grew up in Dewsbury, West Yorkshire, just a few miles from Wakefield, where I grew up.

Lavery's early environment shaped her distinctive voice and empathetic approach to storytelling. Her career spans several decades, during which she has explored diverse themes such as identity, trauma, and social justice, often challenging theatrical conventions. Lavery has over 100 plays attributed to her, many original, and a number of adaptations from *Swallows and Amazons* to *The Lovely Bones*. Lavery's best-known play, *Frozen*, was nominated for a Tony Award and is celebrated for its nuanced exploration of grief and forgiveness.

Her writing frequently addresses the complexities of human relationships and the impact of societal norms, with a particular emphasis on women's experiences and equality. Lavery is recognised for her commitment to inclusivity and her willingness to tackle difficult subjects with honesty and sensitivity. Her attitude towards theatre is rooted in a belief in its transformative power, aiming to provoke thought and foster empathy in audiences.

About the Director - Calum Sharp

Calum has been with WBDS for 6 years, with several roles including Michael in our last production, *That Good Night*. He acted as assistant director on *Veronica's Room* and *Di, Viv and Rose*, and directed a monologue (*Buttons*) in our presentation of *Eight* in July of 2024. This is his first full production as director. He has found it challenging and rewarding in equal measure, and hopes you enjoy the performance as much as he has in bringing it to you.

Cast

In order of appearance

Evelyn - Michelene Harris
Peter - Malcolm Todd
Sally - Emily Girton
Grace - Margarita Papadopoulou
Robin – Bertie Black

The action takes place in the south of England in the early 2000s.

There is one interval of 20 minutes when drinks and ice cream will be available.

Please remember to switch off mobile phones during the performance - even a screen can be distracting to cast and other members of the audience.

Creative Team

Director	Calum Sharp
Production Manager	Rob Dixon
Stage Manager	Dom Gaskell
Assistant Stage Manager	Emily Martin
Set Design	Jerome Foley
Set Construction Team	Jeff Tullin & Society members
Set Dressing	Charlie Willcox
Props & Costumes	Eleanor Roberts
Lighting Design	Annie Haley
Lighting Operator	Jem Woolley
Sound Design	Jeff Tullin
Sound Operator	Jeff Tullin
Poster Designer	Annie Haley
Rehearsal Prompt	Sue Scrimshaw
Front of House Manager	Lynn Burges
Box Office Manager	Calum Sharp
FOH Staff	Society members
Publicity	Society Publicity Group

The Cast



Bertie Black

This is my second production with WBDS after previously portraying the titular Signyman last season. Outside WBDS, I have been acting in theatre and musicals for eighteen years; in places such as Nottingham, Derby, Leicester and London. I also work as a murder mystery actor in hotels across the region, as well as fronting an alternative rock-band.

It has been a joy getting to know what makes the character of Robin tick, and a challenge portraying the more sensitive aspects of this play, but one I have found immensely rewarding with the support and camaraderie of my fellow cast and crew!



Emily Girton

This marks my 10th year as a member of WBDS, during which time I've been involved in a variety of roles both on and off the stage. It feels fitting to return to the stage alongside Michelene and Malcolm, whom I first performed with in my debut in *Conversations after a Burial*. My most recent on-stage role was Vera Claythorne in *And Then There were None*.

Playing Sally has been a very different experience to my previous roles and one I've thoroughly enjoyed exploring. This has been made all the more rewarding by Calum's direction and the shared commitment of the cast. It's a real joy to be back on stage with both old friends and new.



Michelene Harris

I have been with WBDS since 2003 both onstage and behind the scenes, most usually as part of the Saturday morning set-build crew, sometimes as Set-Designer, and often as Costume and Props. After a bit of a break I am delighted to be treading the boards once more amongst faces old and new.

The play is by turns heart-warming and heart-wrenching, and the part of Evelyn a teeter-totter challenge between the two states. There's nothing like inhabiting another person's life, albeit briefly, to put everything into perspective!



Margarita Papadopoulou

I have been involved in theatre productions in Greece and, since moving to England, have continued my theatrical work at WBDS. I have appeared in a range of productions and also directed the one-act play *Music for Amelia*.

In *A Wedding Story*, I play Grace, a woman Sally meets at a wedding reception. Grace is open, steady, and emotionally present — someone who values clarity and commitment. Through her, the play explores the possibility of choosing love deliberately, and the quiet courage required to ask for something lasting.



Malcolm Todd

This is my 18th play at WBDS since I joined in 2009, and the first time in over ten years that I've been in back-to-back plays, following up the rather sinister "Visitor" in *That Good Night* with the hopefully more sympathetic character of Peter Swan. I'll leave it to others to decide which is closer to my real character. Some of you might know me from multiple appearances at the Lace Market Theatre as well, most recently as Godwin in *Mary Shelley*.

Once again, I'm rejoining old friends on stage – Michelene was my sister in *Conversations After a Burial* and now returns after a too-long absence from the Studio stage to be my much loved wife. I'm delighted to act opposite her once more, as well as Emily (*Conversations After a Burial*) and Margarita (*Mother Courage*), and to have a new acting friend in Bertie – it's a lovely cast and it's been a most enjoyable experience under Calum's capable direction: his first of many, I'm sure.

Rehearsal Photos



Coming up...

This is the information we are sure you're all eagerly anticipating.....

May 2026 *The Game's Afoot* by Ken Ludwig, directed by Craig Russell.

It is December 1936, and Broadway star William Gillette, admired the world over for his leading role in the play Sherlock Holmes, has invited his fellow cast members to his Connecticut castle for a weekend of revelry. But when one of the guests is stabbed to death, the festivities in this isolated house of tricks and mirrors quickly turn dangerous. It is then up to Gillette himself, as he assumes the persona of his beloved Holmes, to track down the killer before the next victim appears. The danger and hilarity are non-stop in this glittering whodunit set during the Christmas holidays.

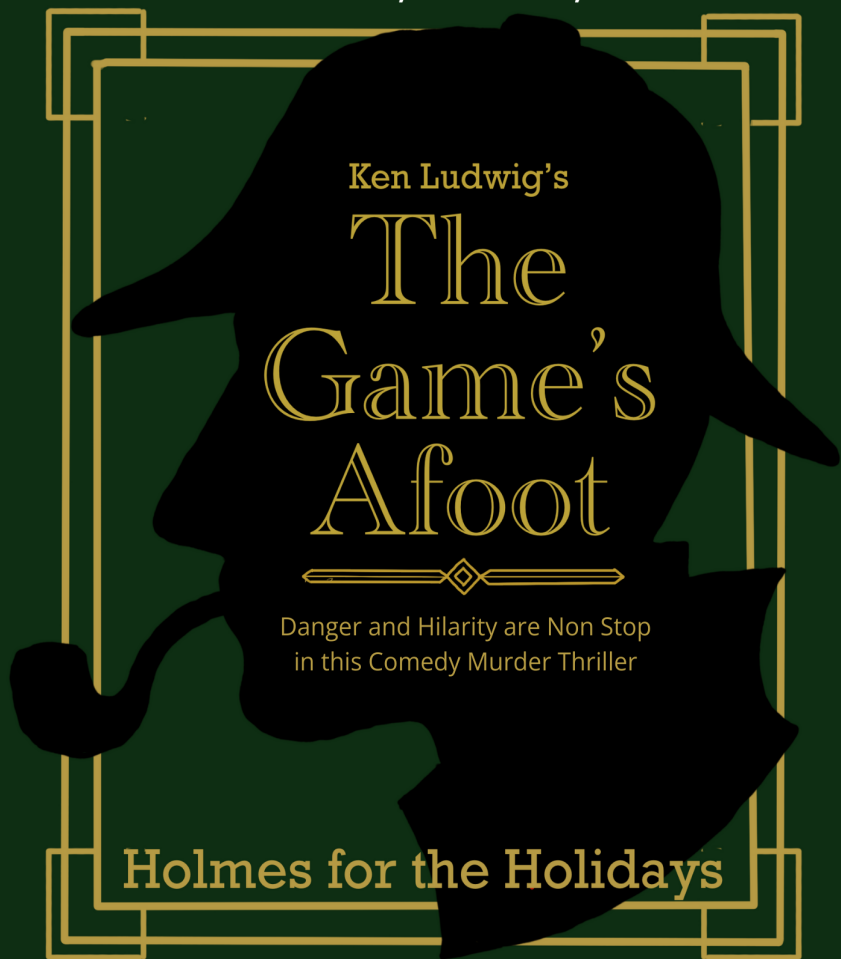
July 2026 will be an evening of one act plays, still to be decided, with new directors to WBDS, Arran Mackay and Jeff Tullin.

November 2026 *Accrington Pals*, directed by award winning Barbara Seymour.

For ticket information and further updates please check our website.

West Bridgford Dramatic Society

The Studio Theatre, Stamford Rd, NG2 6LS



Holmes for the Holidays

12-16 May 2026



WBDS.co.uk

07942352982



This amateur production of "The Game's Afoot" is presented by arrangement with Concord Theatricals Ltd. On behalf of Samuel French Ltd. www.concordtheatricals.co.uk

info@wbds.co.uk

The Revlon Girl

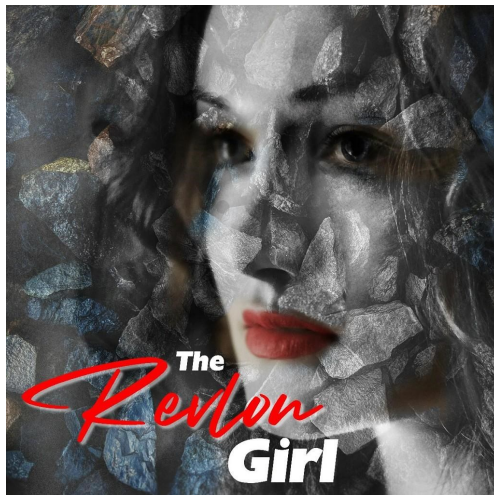
We are delighted to welcome the team from Lace Market to present *The Revlon Girl* by Neil Anthony Docking. 14-15 February at The Studio Theatre. 14th 2.30pm and 7.30pm, and 15th 4pm. Check our website for tickets - all £10.50.

How do you carry on after unimaginable loss? How do you even face the world?

Set eight months after the Aberfan Disaster of 1966, this is the real life story of a group of bereaved mothers who met every week above a local hotel to talk, cry and even laugh without feeling guilty.

At one of their meetings, the women looked at each other and admitted how much they felt they'd let themselves go. Afraid people would think them frivolous, they secretly arrange for a representative from Revlon to come and give them a talk on beauty tips.

Touching, tender, occasionally raw, this is a play that looks into the human heart of disaster and celebrates the humanity that survives.



Beginners to Stage

Did you know, we have a group that uses the Studio on Thursday and Sunday for drama classes.

They cover all age ranges from 4 years to adults.

Thursday is 4-8 year old and 8-12 year olds.

Sunday is midday and has a teen group 12-18 and adult drama classes.

beginnerstostage.uk is the website which has all the details.

So if you or your family are interested in drama, why not learn more on a real stage - here in West Bridgford (other classes available in Sherwood and Burton Joyce).



Join us

We are a friendly bunch and are always keen for new people to join us.

Check the website for details about club nights, sign up for our newsletter and see how to join - membership packages from £3, £6 or £10 per month.

You can also come along here at The Studio on a Tuesday evening at 7.30pm, which is our club night. Just try us out before deciding whether to join.

Alzheimers

Evelyn describes Alzheimers. The facts that we know are:

It is a progressive brain disease that slowly destroys memory and thinking, causing the most common form of dementia. Its caused by brain cell damage from protein plaques.

Symptoms start with memory loss but worsen to affect daily function. While not curable, it's not a normal part of aging, with risk factors including age, genetics, and lifestyle.

Treatments focus on managing symptoms.

It affects over half a million people in the UK.

About 70% of people in care homes have dementia.

For support and more information or to make a donation check alzheimers.org.uk which is the website for the Alzheimers Society.

Tell us what you want

We are always investing in our theatre - with solar panels, new seating, air conditioning and improved lights to make the theatre experience as good as it can be.

We have long wanted to improve both the car park and the front of house interval drinks experience. But these can be expensive.

So we'd like to hear from you:

- Is the carpark the most pressing issue to fix?
- What front of house improvements do you want?
- How can we improve our "curb appeal"?
- Do you need to have hot drinks, cold drinks or ice cream in the interval?
- How can we have an interval and help avoid audience going onto the stage - given our limited space?

Please scan this QR code to a short survey so that we have YOUR views heard. (Hold your smart phone camera over the QR image and follow the link).

Or simply tell front of house when you leave.



Team A Wedding Story

